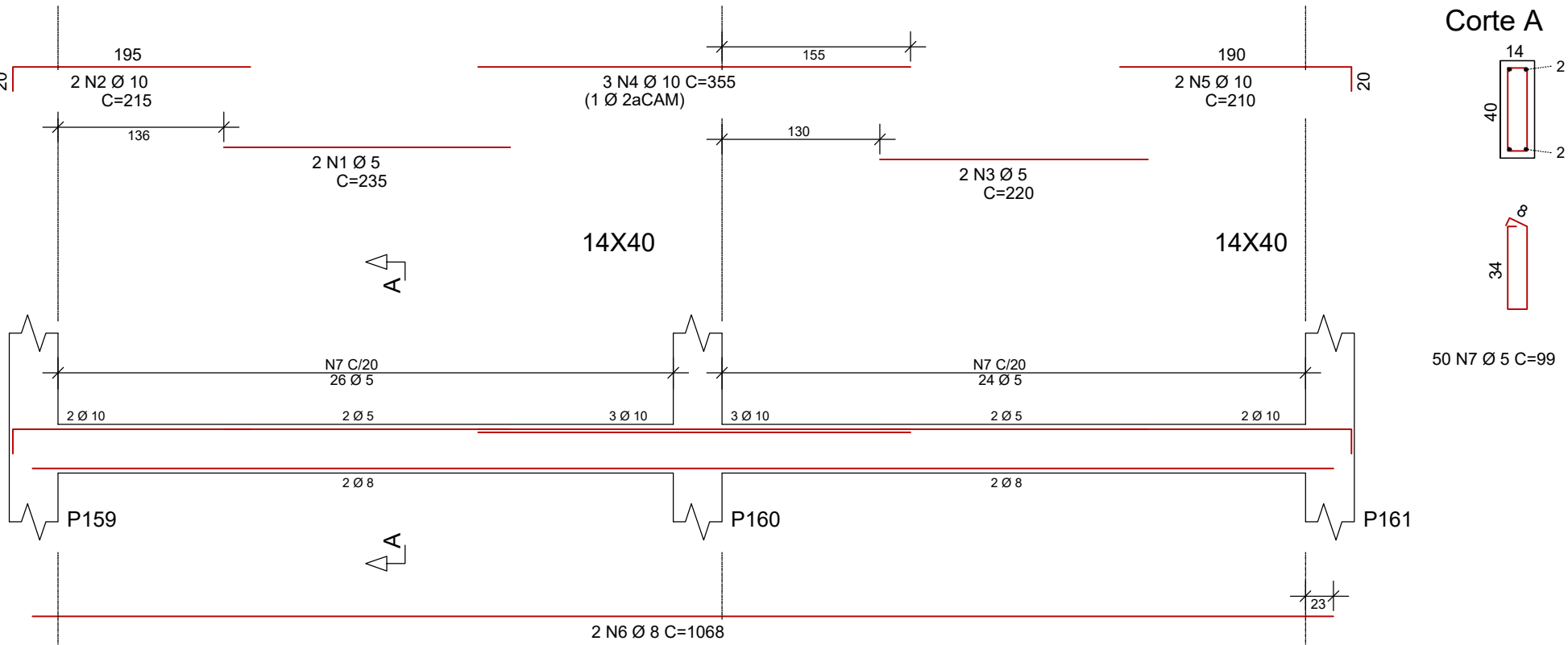
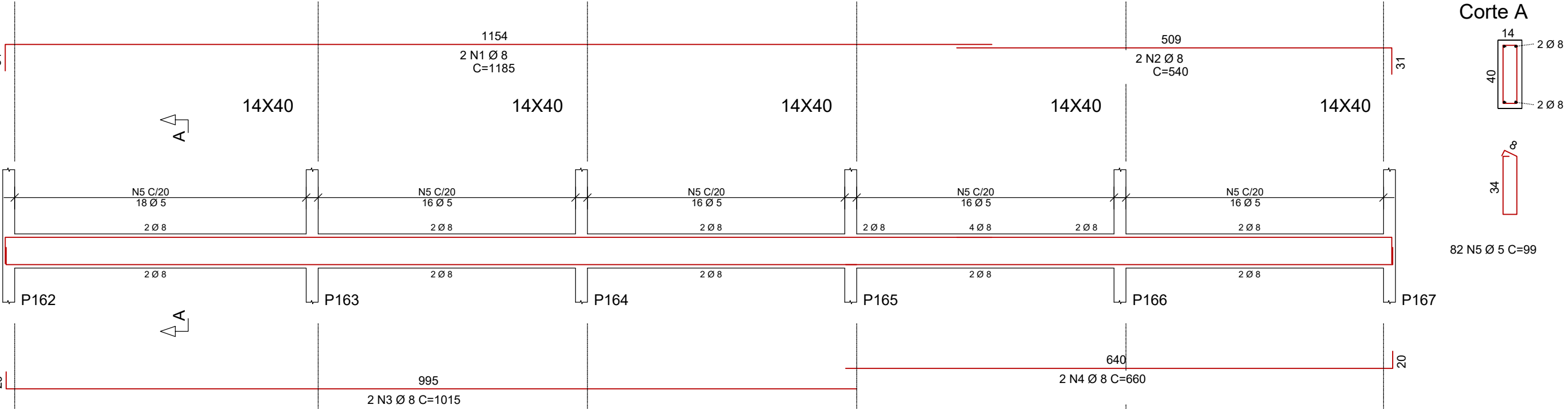


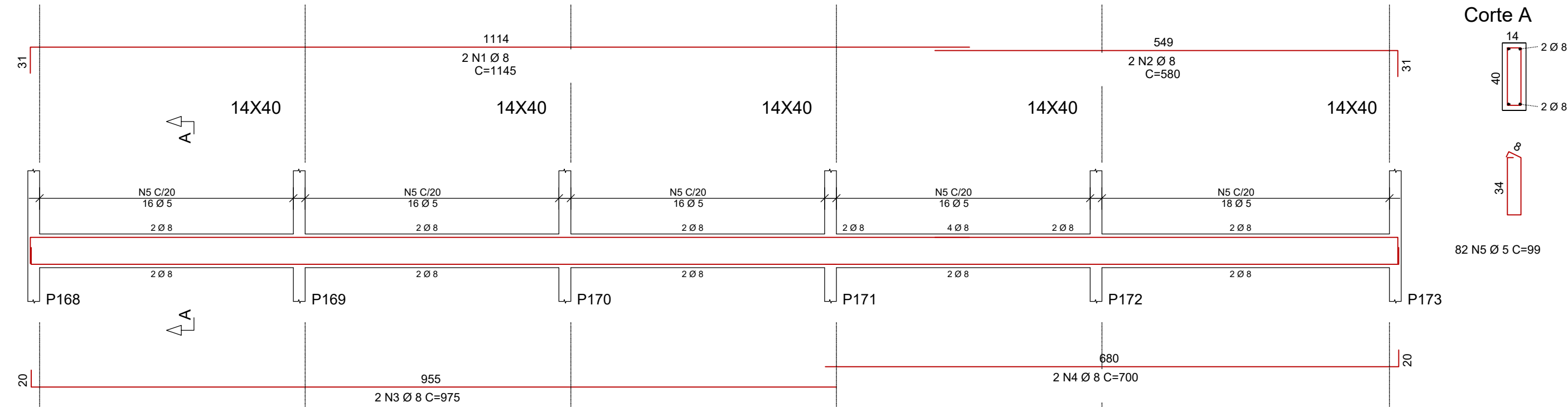
V136



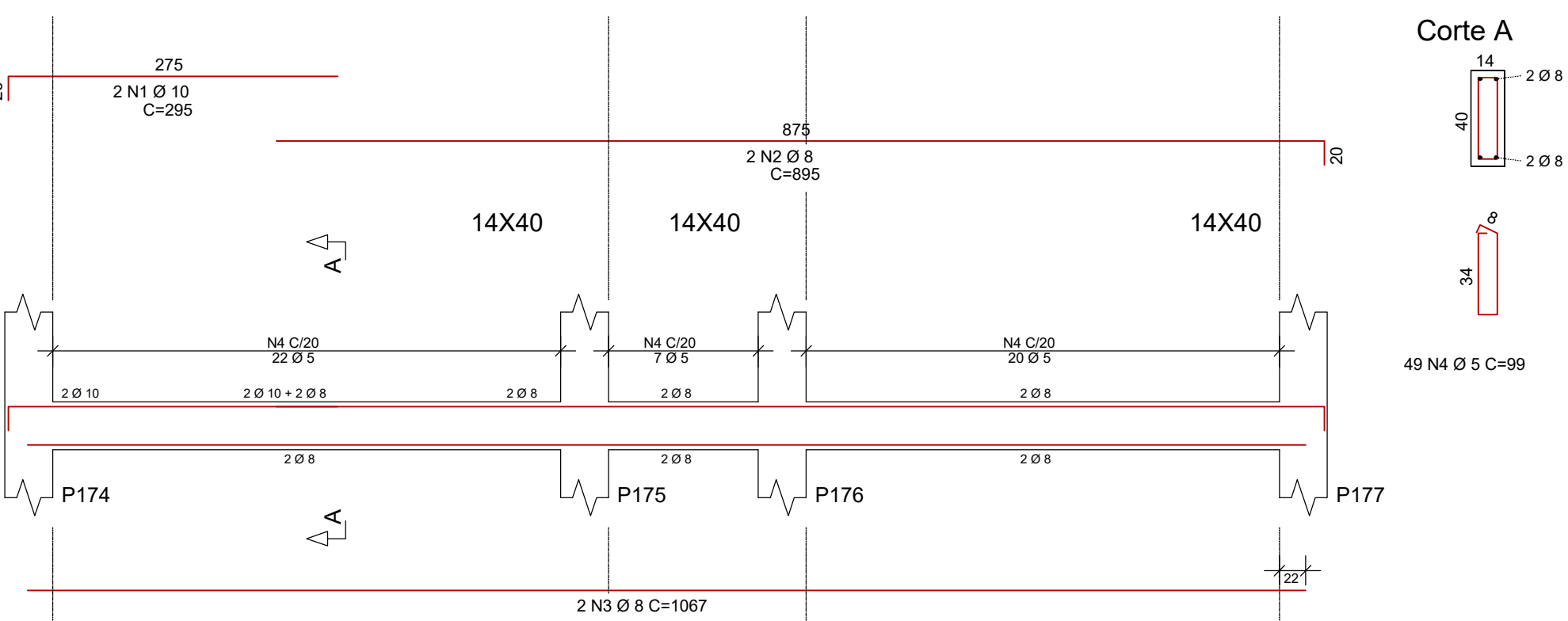
V137



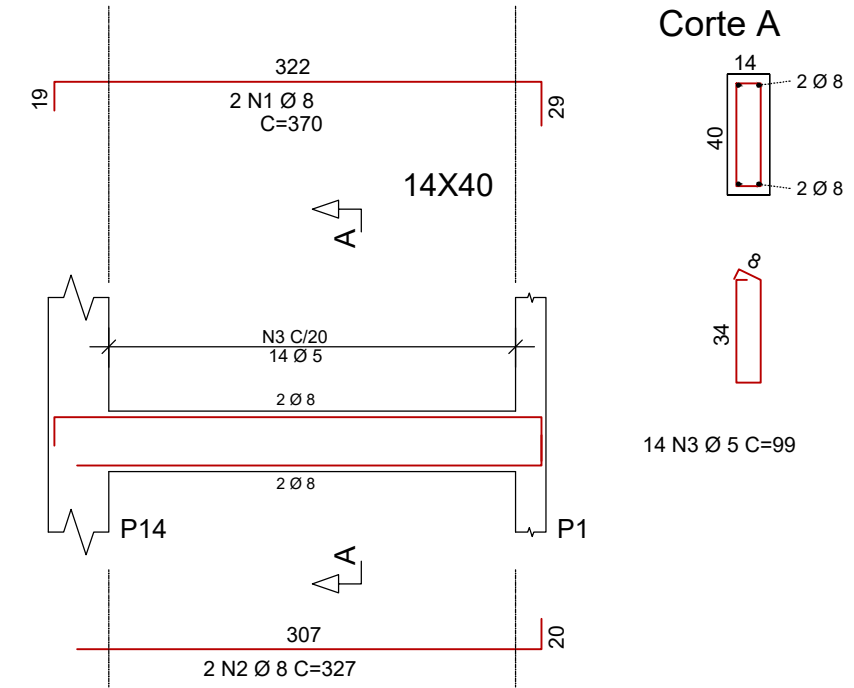
V138



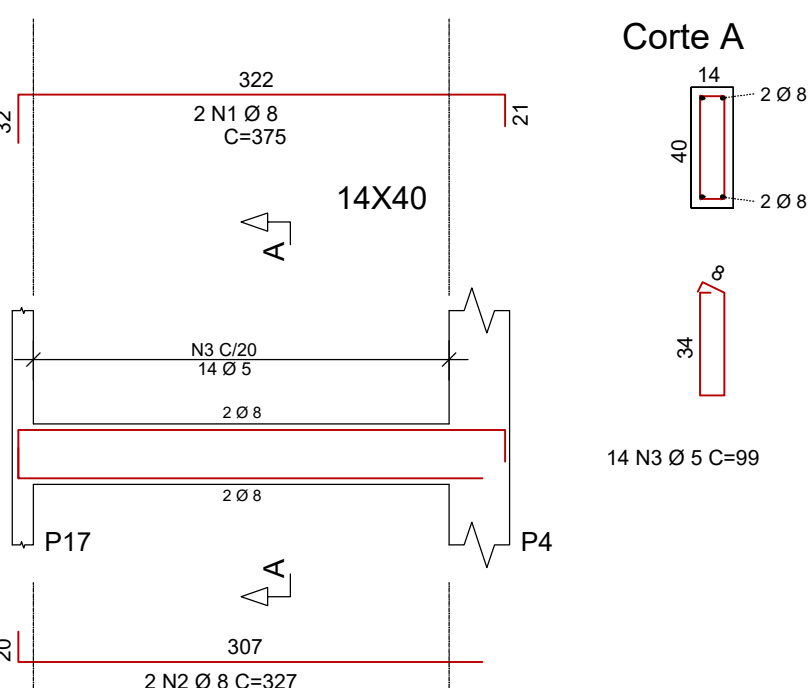
V139



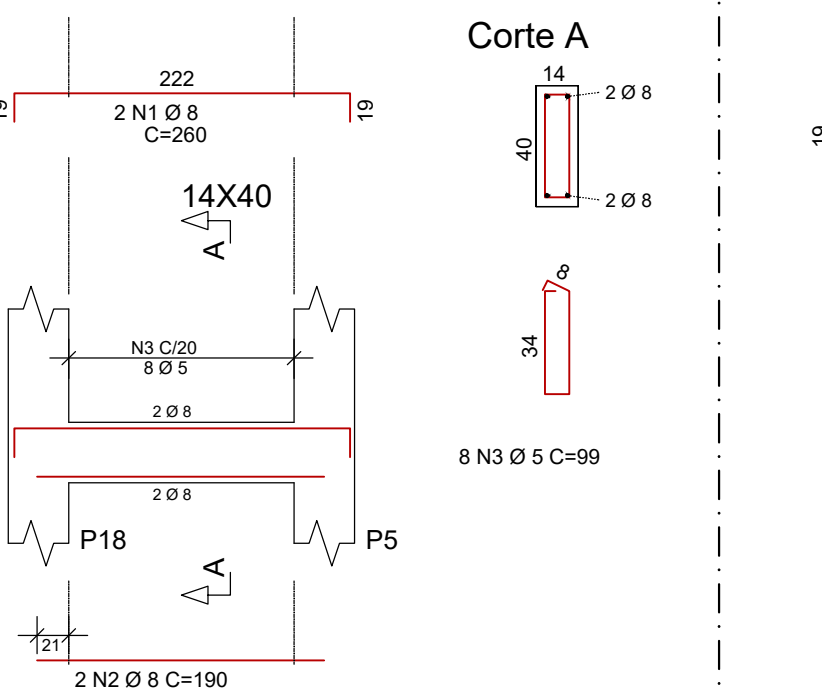
V140



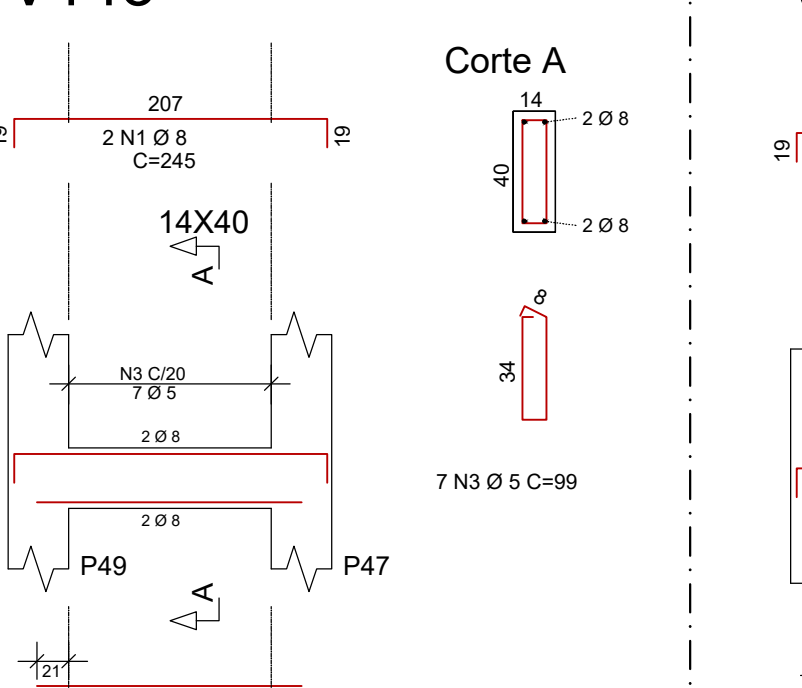
V141



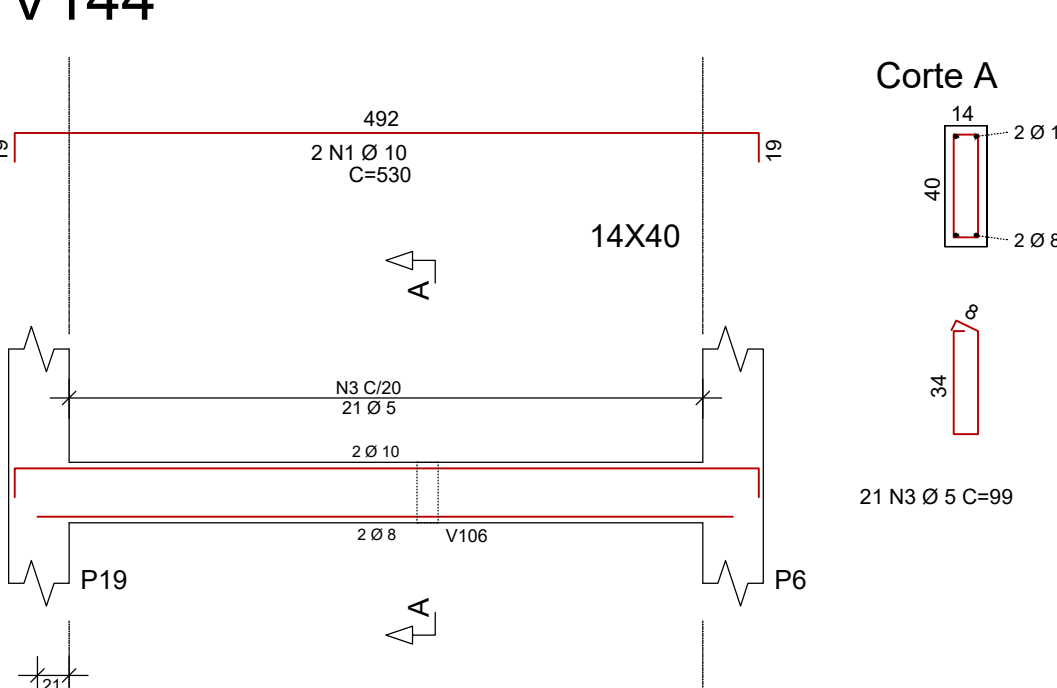
V142



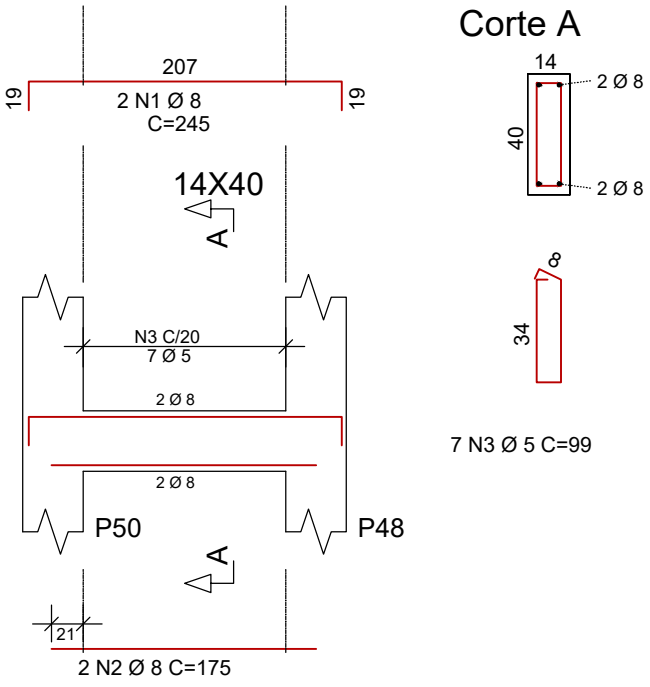
V143



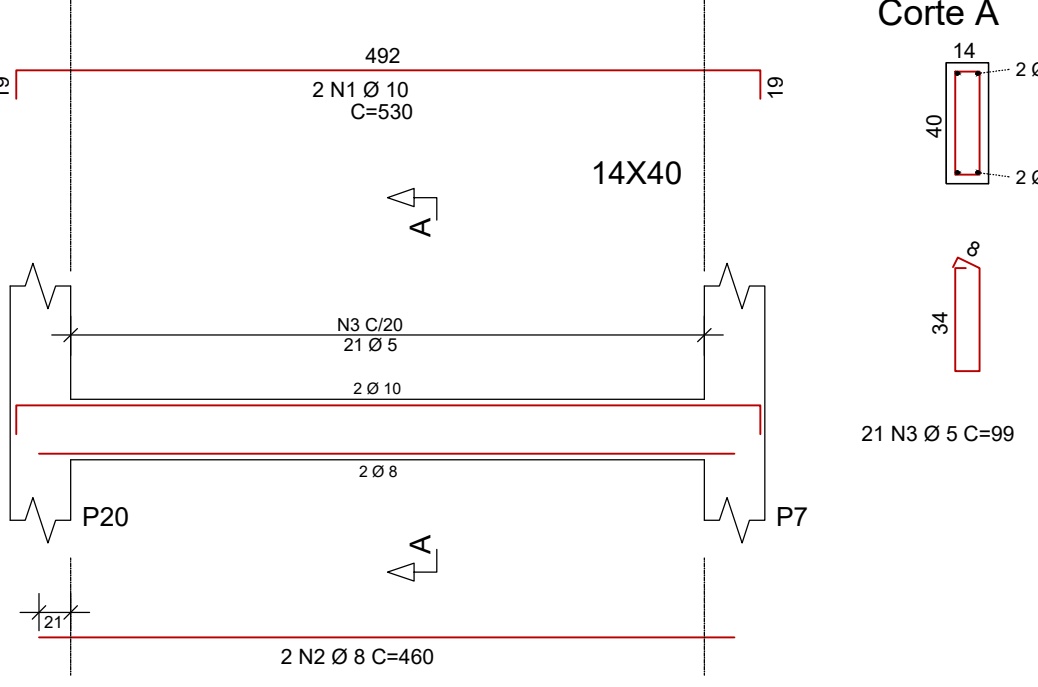
V144



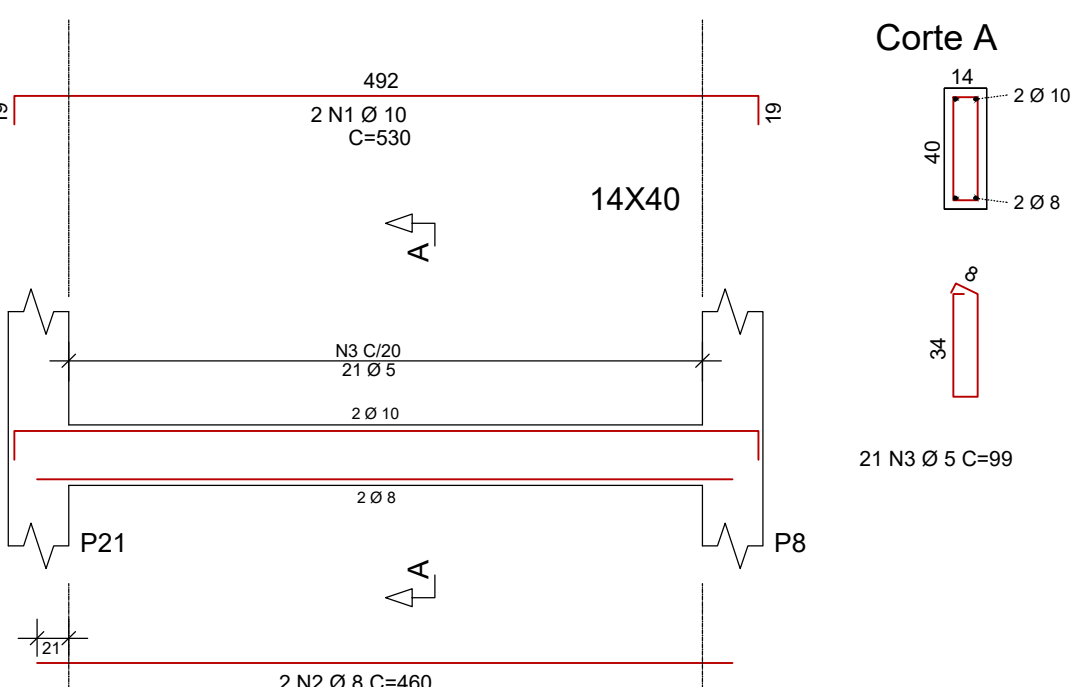
V145



V146



V147



	AÇO	POS	BIT (mm)	QUANT	COMPRIMENTO	
					UNIT (cm)	TOTAL (cm)
V136	60B	1	5	2	235	470
	50A	2	10	2	215	430
	60B	3	5	2	220	440
	50A	4	10	3	355	1065
	50A	5	10	2	210	420
	50A	6	8	2	1068	2136
	60B	7	5	50	99	4950
V137	50A	1	8	2	1185	2370
	50A	2	8	2	540	1080
	3	8	2	1015	2030	
	50A	4	8	2	660	1320
	60B	5	5	82	99	8118
V138	50A	1	8	2	1145	2290
	2	8	2	580	1160	
	50A	3	8	2	975	1950
	50A	4	8	2	700	1400
	60B	5	5	82	99	8118
V139	50A	1	10	2	295	590
	50A	2	8	2	895	1790
	50A	3	8	2	1067	2134
	60B	4	5	49	99	4851
V140	50A	1	8	2	370	740
	50A	2	8	2	327	654
	60B	3	5	14	99	1386
V141	50A	1	8	2	375	750
	50A	2	8	2	327	654
	60B	3	5	14	99	1386
V142	50A	1	8	2	260	520
	50A	2	8	2	190	380
	60B	3	5	8	99	792
V143	50A	1	8	2	245	490
	50A	2	8	2	175	350
	60B	3	5	7	99	693
V144	50A	1	10	2	530	1060
	50A	2	8	2	460	920
	60B	3	5	21	99	2079
V145	50A	1	8	2	245	490
	50A	2	8	2	175	350
	60B	3	5	7	99	693
V146	50A	1	10	2	530	1060
	50A	2	8	2	460	920
	60B	3	5	21	99	2079
V147	50A	1	10	2	530	1060
	50A	2	8	2	460	920
	60B	3	5	21	99	2079

RESUMO AÇO CA 50-60			
AÇO	BIT (mm)	COMPR (m)	PESO (kg)
60B	5	381	59
50A	8	278	110
50A	10	57	35
Peso Total 60B =		59 kg	
Peso Total 50A =		145 kg	

Exco Faces
Volume de concreto de VIGAS (m3) 4.4 4.1
Taxa de armadura (kg/m3) 46.2 50.2

ESPAÇO RESERVADO PARA PREFEITURA:

PROJETO:
TERMINAL RODOVIÁRIO DE VÁRZEA GRANDE - MT

CONTRATO: O.S Nº: 001/2021

Nº: XXXX REVISÃO Nº: 02 DATA:

ESCALA INDICADA:
ESCALA INDICADA NO PROJETO
CONTEÚDO:

• DETALHAMENTO DE VIGAS BALDRAME

NOME DO CLIENTE:



AUTOR DO PROJETO:

RESPONSÁVEL TÉCNICO DO PROJETO:

RRT PROJETO:

RRT DE EXECUÇÃO:

ASSINATURA DO CLIENTE:

ASSINATURA PROFISSIONAL:

ASSINATURA PROFISSIONAL:

CONFIGURAÇÃO DE PLOTAGEM:

☐ MODELO PMC

☐ ARQUIVO EM ANEXO: